

# Li-Tm (Lithium-Thulium)

H. Okamoto

The Li-Tm phase diagram was unknown in [Massalski2]. Figure 1 shows the Li-Tm phase diagram constructed on the basis of a schematic phase diagram and a table of invariant reaction temperatures and compositions given in [1998Gan].

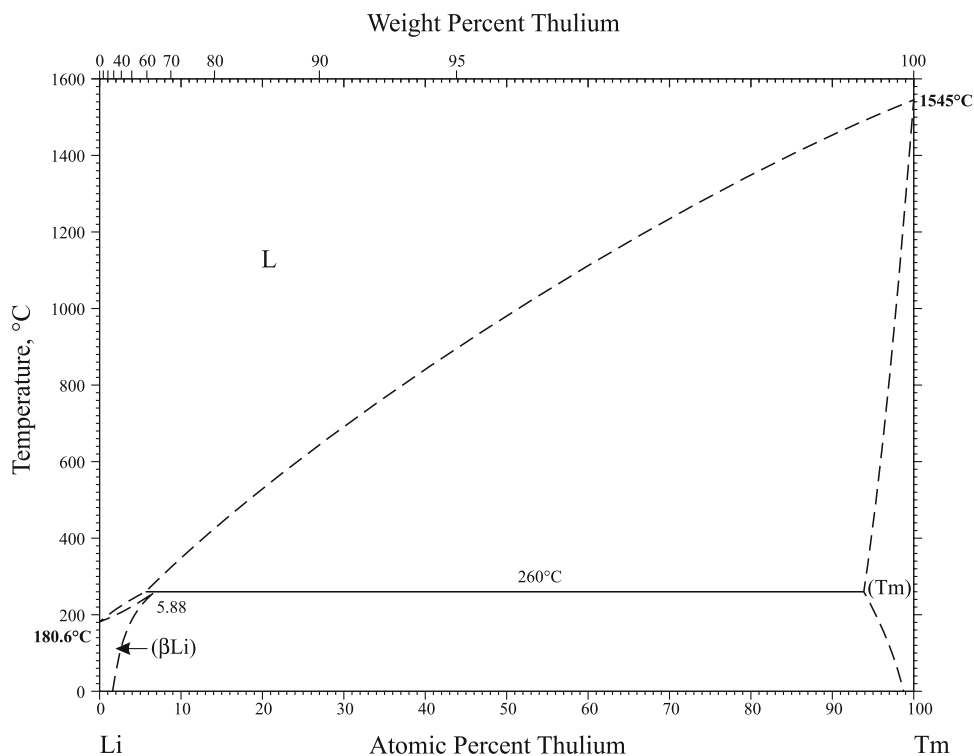
Table 1 shows Li-Tm crystal structure data.

## Reference

**1998Gan:** N.N. Ganiev, Kh.M. Nazarov, and M.D. Badalov, Interaction of Lithium with Rare-Earth Metals, *Izv. Ross. Akad. Nauk, Metally*, 1998, (6), p 109-112, in Russian; TR: *Russ. Metall.*, 1998, (6), p 132-136

**Table 1** Li-Tm crystal structure data

Phase	Composition, at.% Tm	Pearson symbol	Space group	Strukturbericht designation	Prototype
(βLi)	0-5.88	<i>cI2</i>	<i>Im</i> $\bar{3}m$	A2	W
(Tm)	? to 100	<i>hP2</i>	<i>P6<sub>3</sub>/mmc</i>	A3	Mg



**Fig. 1** Li-Tm phase diagram